

TO STUDY THE EFFECTIVENESS OF LEARNING HUB STRATEGY ON LEARNING ENVIRONMENT

Prof.Asha Thoke,
Ashoka College of Education, Wadala,
Nashik.

Miss Madhuri Gautam Pawar,
Final Year B.Sc.B.Ed,
Ashoka College of Education, Wadala,
Nashik.

Abstract:

The purpose of the study was to investigate the effect of learning hub strategy on learning environment. The sample consisted of 56 students of 8th Std of S.S.C board from R.J.C.B.Girls High school, Nashik Road. Learning hub strategy was implemented on experimental group. The gain scores were computed after test for all the experimental students.

The findings of the study were:

- Better gain scores were obtained by the students taught science through the Learning hub strategy compared to those who were taught through traditional teaching.
- Superior performance in test showed by the group of students taught science through learning hub strategy as compared to group of students taught science through Traditional Teaching method.

The conclusion of the study was that the Learning hub strategy plays an important role in changing the learning environment.

Introduction:

Millions of children go to school to take education, to get knowledge. Millions of rupees are being invested annually in this process. Despite all these efforts in education of children, pupil's achievement must to be desired. Nowadays educational system has adopted various new trends & techniques of teaching & learning. Previously the education was Teacher centered but now it is Learner centered. So, the focus is being shifted from the teacher to the student. In every classroom we find the individual differences among the students / learners. As the students come from different backgrounds we find different behavior pattern among them. We found students with different abilities & different attitude, different interest & different perception power. All these factors affect their academic performance. But this is not the case; every student can achieve High scores or learn if they are provided with the appropriate learning condition and time. So, teacher cannot teach them

by using only traditional method of teaching. If the teacher is expecting that the student should get approximate 100% of what she is teaching, then she has to equally take extraordinary efforts to make them learn. These extraordinary efforts are nothing but the new teaching styles and the teaching methods that the teacher needs to use in her teaching process.

A teacher should create new and active learning environment which will create enthusiasm and interest in students to learn by their own. If a learner takes interest in learning then learning becomes more effective. So it's important to change the tiresome environment into healthy and active environment.

Statement of problem:

“To study the effectiveness of Learning Hub strategy on Learning Environment.”

Objectives:

- To compare the score of Experimental group and Non Experimental group.
- To study the effectiveness of learning hub strategy on Learning Environment.

Operational definitions:

- **Learning hub** – It is a hub in which topics will be discussed among group by using various sources and then presented in front of class in creative manner.
- **Effectiveness** – It means to know the fruitfulness of the topic.
- **Strategy** – A plan of action designed to achieve.
- **Learning Environment** – Activities like group discussion and creative presentation was used to change the tiresome environment.

Need & importance :

Due to the various changes in education field, teacher has to change her roles according to the needs of learner & society. Teacher should update her knowledge which is important but she should implement that knowledge practically in schools or colleges. Learning hub strategy is innovative approach & technique which makes learning environment more lively & interactive. It is more creative than traditional teaching. This is to check effectiveness of Learning hub strategy on the achievement of the student and learning environment. If it proves effective strategy for learning then all student will be on the same level, more interactive, more confident and really the environment will be more suitable for learning for each & every student.

Research question:

“Is there any positive effect of using Learning hub strategy on Learning Environment?”

Hypothesis:**Null hypothesis**

- There will be no significant difference between the scores of Experimental group and Non-Experimental group.
- There will be no effect of learning hub strategy on the learning environment.

Method adopted for the present study:

The researcher used **experimental method** for present study.

Chosen sample & method:

Random selection (Lottery Method) method was used for sampling. The research investigation was carried out on the 56 students of class VIII of S.S.C. Board from R.J.C.B. Girls High school, Nashik road.

Experimental design:

In the present study one group was experimental design on whom the test was conducted.

Tools:

The Class Test (designed by the researcher) tool was used for the purpose of data collection

Procedure:

The experiment was conducted in Two stages:

- **Stage-1:** Selecting the experimental sample and then experiment was conducted on 56 students of class VIIIth S.S.C. Board from R.J.C.B. Girls High school, Nashik road.
- **Stage-2:** Conducting the experiment:

The experiment was conducted in following steps given below:

Step-I : Teaching by Traditional Method to Non Experimental group and Test.

Step-II : Teaching by Learning Hub Strategy to Experimental group and Test.

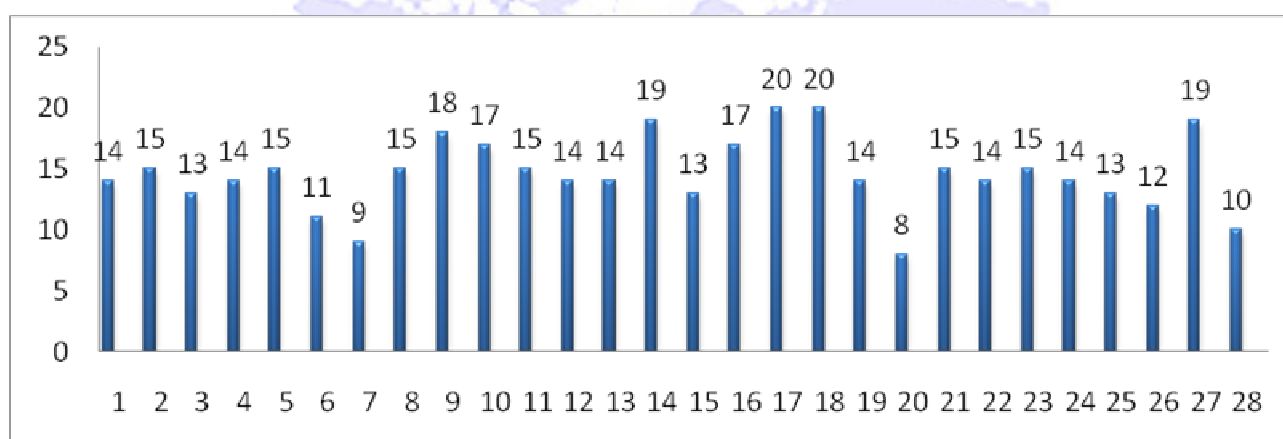
Step III : Calculation of results.

Data Analysis & Interpretation:

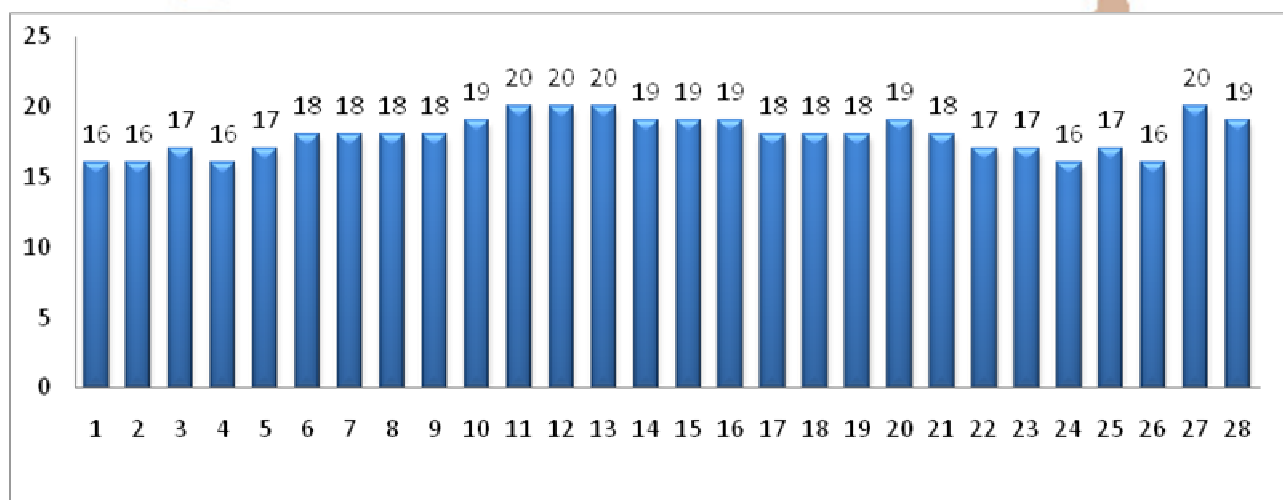
The mean, S.D. and the ‘t’ value was calculated for measuring difference between the means of the Experimental group score and Non Experimental group score.

Test	No. of student(N)	Mean	Standard deviation (S.D)	't' value	table 't'	Level of significance
Non Experimental group score	28	14.53	3.0243	5.5995	2.05	0.001
Experimental group score	28	17.96	1.3188			

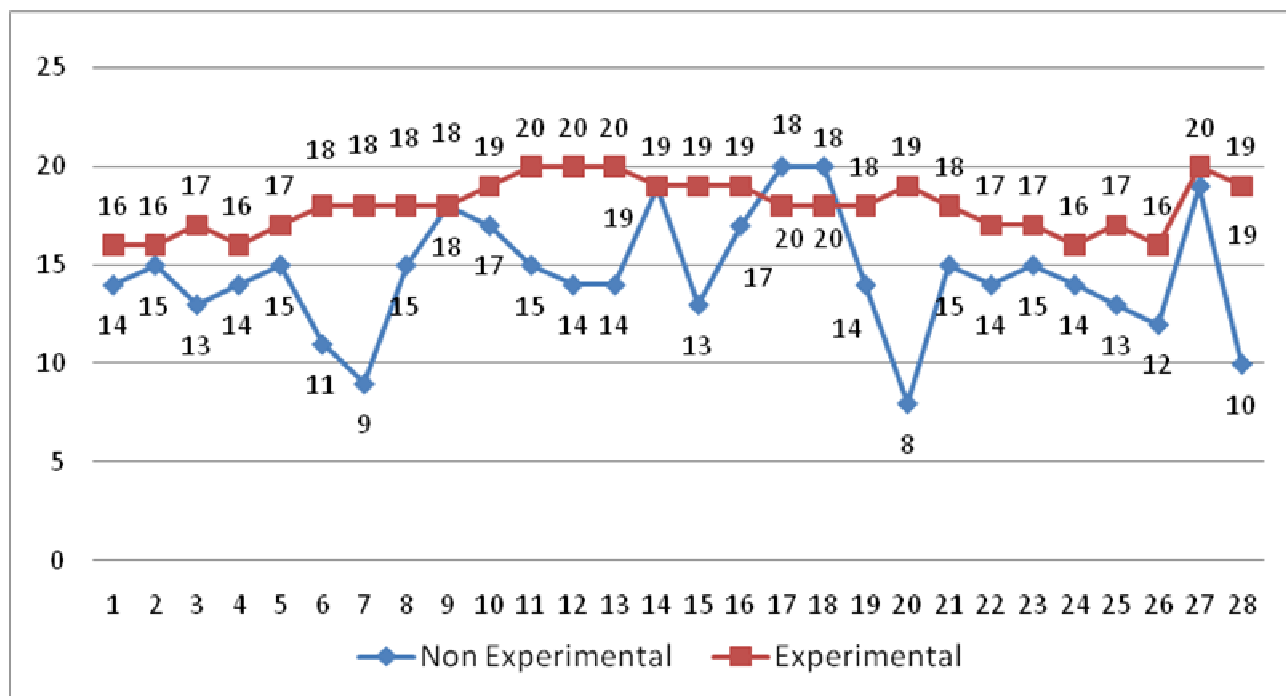
Graph 1 – Scores of Non Experimental Group



Graph-2 Scores of Experimental Group



Graph 3 – showing difference in the Experimental group and Non Experimental Group.



Interpretation:

The above table reveals that the 't' values was found to be significant at 0.001 level. It shows that students of Experimental group have scored significantly higher than what they had taught by learning hub strategy.

Hence, it may be inferred that the two groups differed significantly and the Experimental group performed much better than control as it shows superior mean gain scores. Hence it may be inferred that Learning Hub Strategy plays an important role in changing the learning environment. With the help of above observation researcher has to reject null hypothesis.

Findings:

The findings of the present investigation pertain to students of class VIIIth of a representative school of R.J.C.B.Girls high school better gain scores were obtained by the students taught science through the Learning hub strategy.

Superior performance on the criterion achievement test was showed by the group of students taught science through learning hub strategy as compared to the traditional teaching.

Conclusion:

The conclusion is that the Learning hub strategy plays an important role in changing environment and improving the achievement of student in science as well as in various skills. Learning environment plays lead role in teaching learning process as use of learning hub have fruitfully changed the environment with better results.. It was found to be superior and effective strategy than traditional teaching for class VIIIth students in R.J.C.B.Girls high school. Hence Learning hub is a key which opens the way of connections and closes the door of isolation

Recommendation:

- Teacher should use Learning hub strategy once in two weeks for changing the environment and removing passiveness of the students.
- Teacher should motivate students to take active participation in learning process like in discussion and presentation.

References:

1. Creswell, J.W(2003) Research design:Qualitative & Quantitative mix method approaches
2. Mule & Umathe-Research Methodology
3. Bruce,R..Joyce,Marsha weil-Models of Teaching,8th Edition,Pearson Prentice Hall,U.S.A
4. Khanna S.D-Essentials of Teaching & learning-Douba house ,Delhi
5. V.R.Benakanal-Models of Teaching- Anmol Publication Pvt.ltd,New Delhi 11002
6. https://en.wikipedia.org/wiki/Learning_environment
7. <http://edglossary.org/learning-environment/>
8. <http://www.igi-global.com/dictionary/learning-environment/16867>
9. http://www.teachthought.com/learning/10-characteristics-of-a-highly-effective-learning-environment///www.p21.org/storage/documents/le_white_paper-1.pdf
10. energizer@bahaiacademy.org